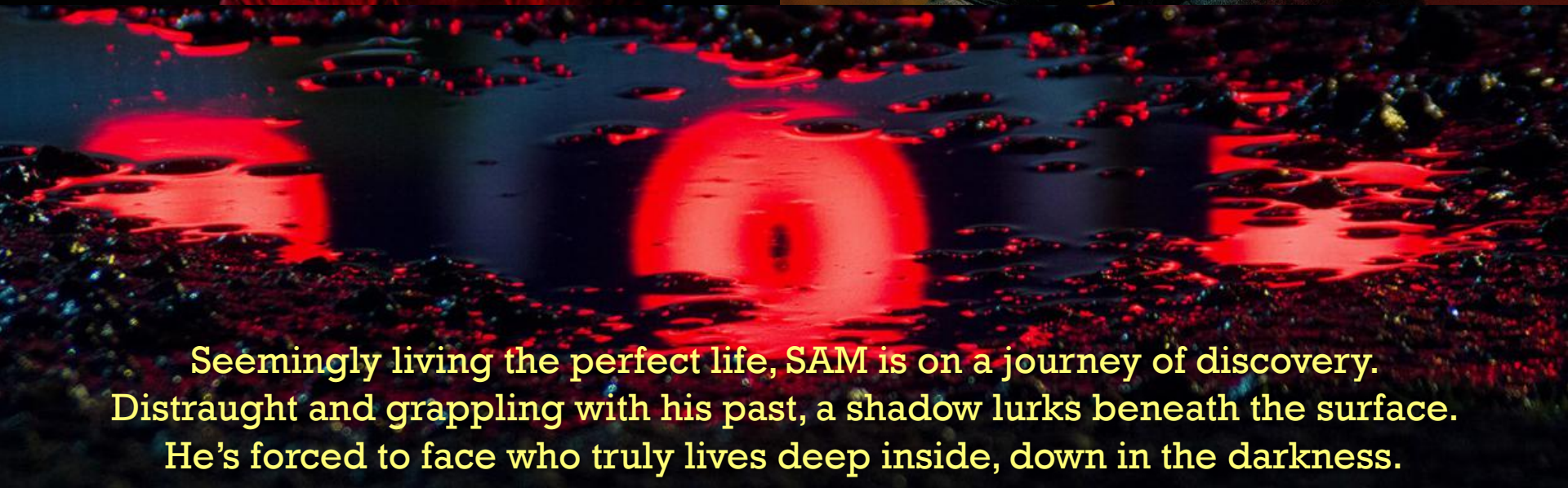




THE
BODY
CHARACTERS



Seemingly living the perfect life, SAM is on a journey of discovery. Distraught and grappling with his past, a shadow lurks beneath the surface. He's forced to face who truly lives deep inside, down in the darkness.



SAM

Sam's odyssey in the desert is an existential battle for his soul. In endless turmoil, he searches for a sense of purpose and belonging. His serpentine male ego is a deadly siren, luring him farther and farther off course. Denying parts of himself, forced to wear the mask society so graciously encourages, a Shadow grows, lurking in the dark recesses of Sam's mind.

Despite Dean's best efforts, Sam is unable to see the beauty of life. If he could only take a peek outside himself, he would find that it surrounds him. Tragically, the push and pull eats away at Sam's psyche. Inevitably shattered, and unable to unite the light with the dark, the Shadow rises to the surface and is unleashed. It feeds him, it drives him, and ultimately it consumes him.

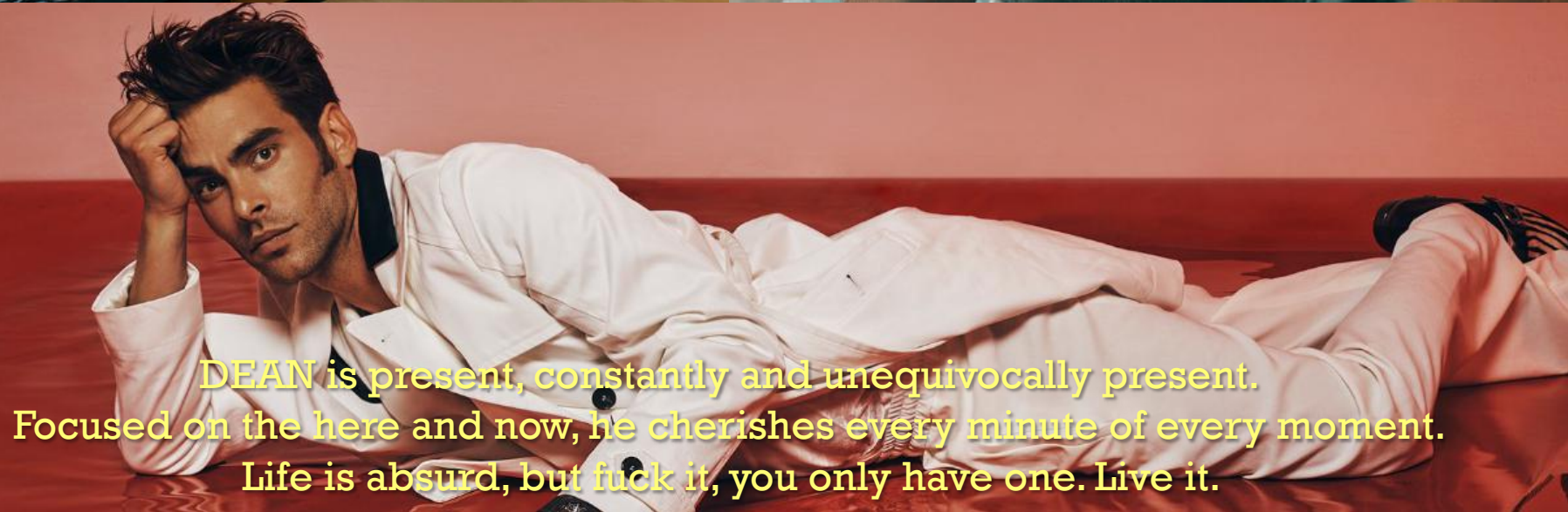
CHARACTER TRAITS

- Gentle Features
- Slight Build
- Glasses
- Unassuming
- Logical
- Wilful & Proud
- Intellectual
- Demure

SPINE

TO HOLD ON

He wants to cling to his humanity, but loses his grasp on what's real.



DEAN is present, constantly and unequivocally present.
Focused on the here and now, he cherishes every minute of every moment.
Life is absurd, but fuck it, you only have one. Live it.



DEAN

What to write about Dean, well, as he so poignantly puts it, he is here to make this little jaunt in the desert bearable, and not so boring and angsty. Ripe with satire, he brings levity to the story, allowing the audience to laugh at the absurdity of their predicament. A wise golden retriever, a calm hummingbird, a focused butterfly, Dean is the only companion that could possibly counterbalance Sam's constant dread.

He talks, he sings – rather poorly – and then he talks some more. Yet, hidden beneath the boisterous bravado are nuggets of truth and positivity. Holding a mirror to Sam, Dean wants nothing more than to demonstrate how to live in the here and now and bask in the beauty of living life to its fullest. The enchantment is everywhere, if you take the time to look. Dean clings to hope – the allure of life is too sweet.

CHARACTER TRAITS

- Striking Features
- Beautiful
- Powerful Presence
- Piercing Eyes
- Adventurous
- Gregarious
- Overzealous
- Loyal

SPINE

TO LIVE JOYFULLY

He wants to enjoy all the beauty life affords.



TOBY is a steadfast guidepost and a sure-fire mentor.
Oozing down to earth wisdom, he's a friend to everyone he meets.
He has a true love for humanity and everything that makes one human.

TOBY

Toby is the emotional glue that holds this story together. A genuine soul with the uncanny ability to make friends with a tree, he thrives on small talk and making people feel heard. Innately sensing Sam's angst and trepidation, he hurls sage advice and words of wisdom like a gunslinger in the Old West. Every time Toby graces the screen, his poignant pontifications are meant to steer Sam back on the right path. Unfortunately, Sam is convinced that his fate is deservedly sealed.

Toby has achieved Sam's ideal life – creating a beautiful family surrounded by love, confidently at peace with his place in the world. Beneath the lines on the page, Sam speaks with an older version of himself, a version he wishes he could manifest. If Sam could just put the past away and keep the future at bay, a new destiny would be revealed – a life where he becomes Toby – one day, maybe.

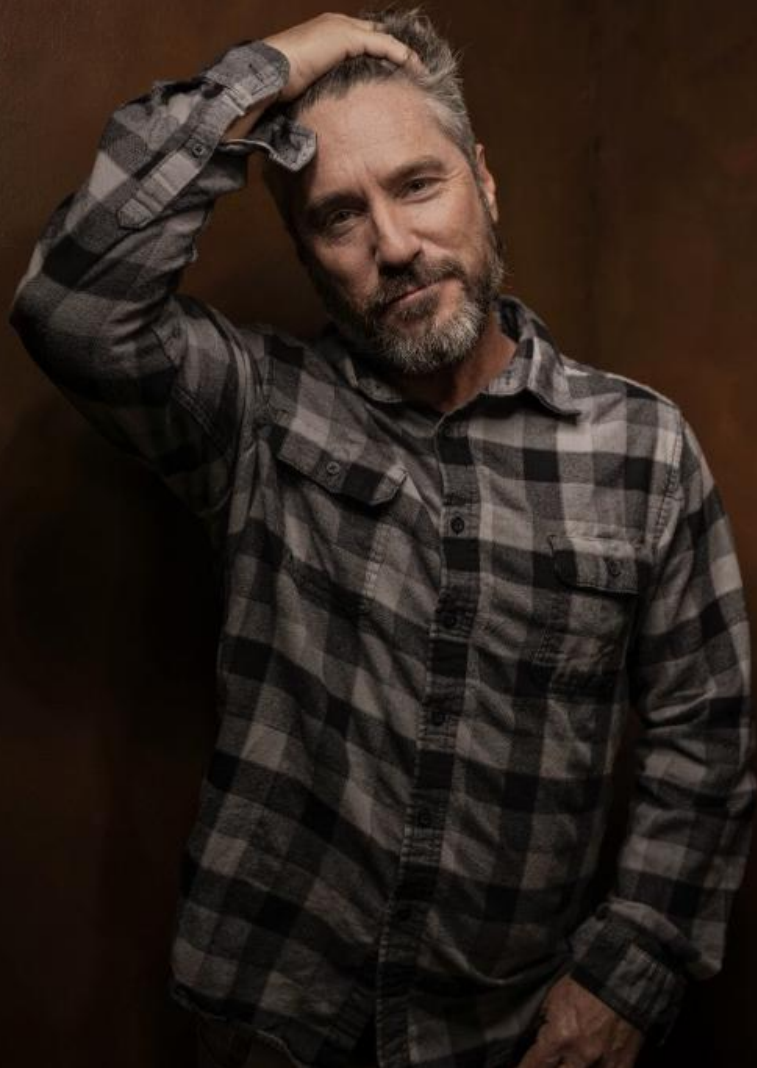
CHARACTER TRAITS

- Big Burly Bear
- Kind Eyes
- Warm Smile
- Strong Handshake
- Pure Love
- Approachable
- Outdoorsman
- Honest

SPNE

TO ADVISE

He sees a fellow man in need and wants to help in any way possible.



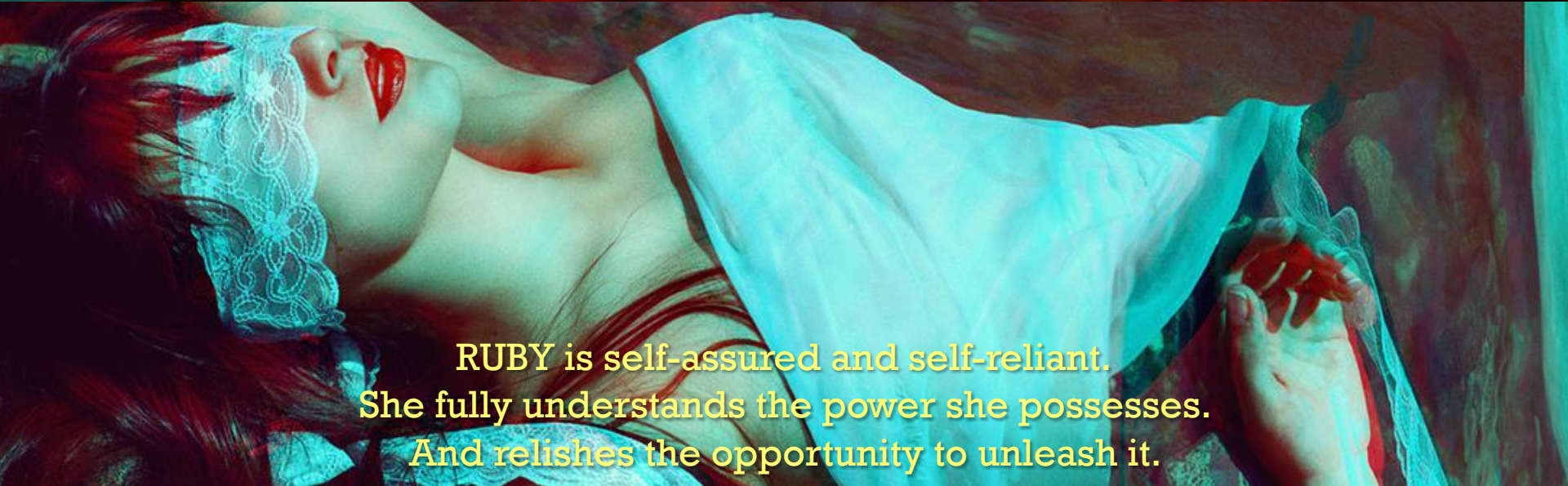


ALL FEMALE ROLES

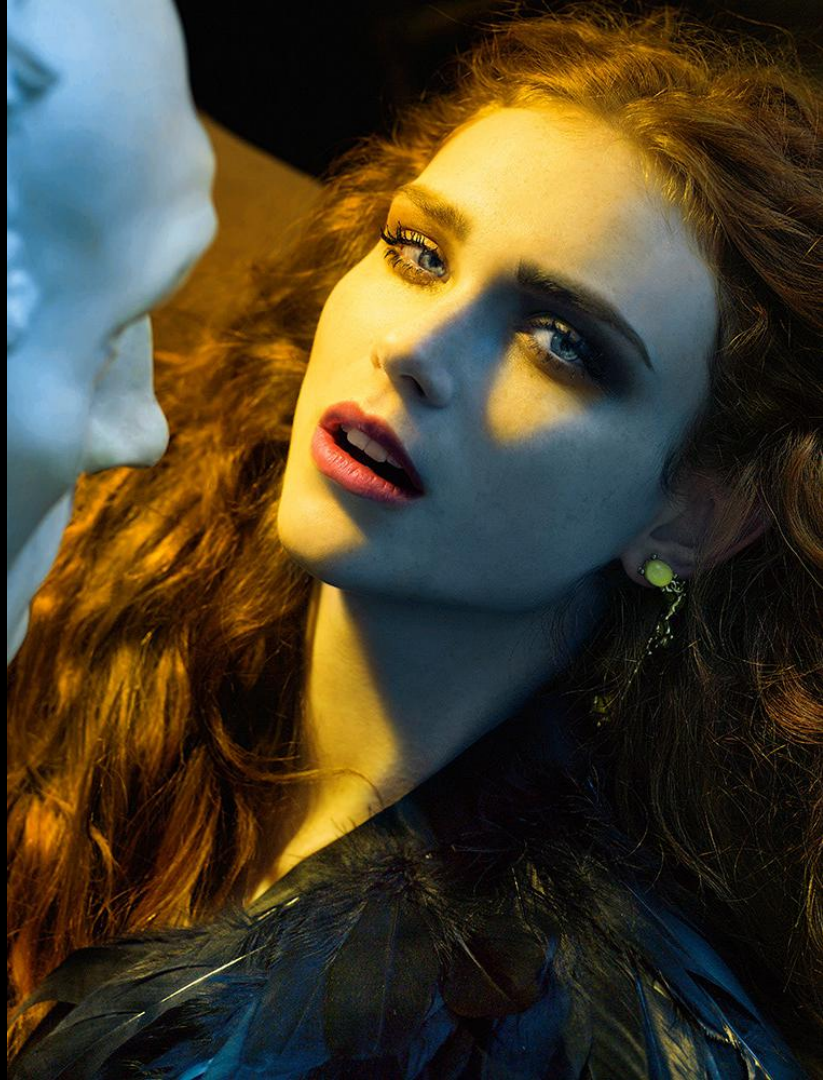
Throughout this story, female characters are deliberately placed for very specific reasons. It is not by accident that Sam is constantly surrounded by and interacting with women at every turn. Who the women are, their age, look, and the way they view and live their lives is meant to be a mirror to Sam's psyche in the given moment.

All SEVEN roles will be played by the same actress. There is no inherent connection, just a hint of the actress hidden beneath the character will shine through. Not only will we give each woman a unique personality, but the striking hair, make-up, and wardrobe choices will help separate and delineate each character.

The unease of seeing the same actress repeatedly will ratchet up the tension, it's off-putting, jarring even. This heightened reality will build throughout the story and drive home Sam's skewed view of masculinity and femininity – where all women are shades of the same person. Now, the female characters are dripping with metaphor and every interaction with Sam is a commentary on his inability to reign in the fragile male ego.



RUBY is self-assured and self-reliant.
She fully understands the power she possesses.
And relishes the opportunity to unleash it.



RUBY

Ruby is a firecracker and a muse. Empathic to a fault, and a borderline clairvoyant, she has the uncanny ability to read people very quickly. In the wrong hands, this power could be used for evil, but Ruby is a gracious soul. Becoming what others need most in any given moment, she digs through the masks people project. She sees the true Sam, buried beneath it all. Naively optimistic, she wants Sam know and understand his true self, the darkness and the light.

She cares for Sam, in her own way. By exploring the depths, bringing all to the surface, she hopes he can become a singular unified self. However, she has no idea what she helps unleash and the fate Sam's *Shadow* brings.

CHARACTER TRAITS

- Intoxicating Presence
- Gentle Eyes
- Whimsical Style
- Bottle Red-Hair
- Imaginative
- Giving & Accepting
- Caring
- Inspiring

SPINE

TO GIVE BEAUTIFULLY

She wants to bring out everyone's best self, whatever that may be.



MANDY

With Mandy, what you see is what you get – she doesn't put on an act on for anyone. She's lived a tough life, but is stronger for it. The experience and knowledge she's gained has made her oddly confident with her lot in life. Hopes and dreams have passed her by, and life keeps trying to break her, but she keeps on trucking, keeps on showing up. She perseveres. Her reward is coming home to the unconditional lover of her two dogs.

The chance encounter with Sam and Dean borderlines on the surreal, the whimsical, and the fantastical.

CHARACTER TRAITS

- Truck-Stop Beauty Queen
- Tired Eyes
- Weathered Skin
- Genuine
- Unapologetic
- Hard-Working
- Surly

SPINE

TO ENDURE

She will make it through the day and come back tomorrow.



EVE

Eve lives a blissful existence, supported both emotionally and physically by her loving family, especially her father, Toby. His love is tangible and it is never in doubt. Raised to be true to herself, Eve is aware of the injustices in life and will leave the world a better place.

Fate has dealt Eve the most unfair of hands, but she will not abandon hope. A chance encounter with Sam, who has ultimately succumbed to his shadow's dark desires, crushes her world and takes everything from her. She will rise above and become the tenacious warrior required.

CHARACTER TRAITS

- Warm Eyes
- Soft Features
- Comforting Smile
- Youth Incarnate
- Innocent
- Head Strong
- Self Confident
- Welcoming

SPINE

TO PERSIST

She is the future, she will not be subdued.

DESK CLERK



Barely 18, a emo/scene kid circa 2004.
Heart on her sleeve, always caught in her emotions.
She feels everything to the fullest.

ASHLEY



Comfortable in motherhood and her 30s.
She means well, but with a forceful personality, it's
hard to be your true self in her presence.

SAM'S MOTHER



A loving 80s helicopter mom.
Style be damned, she digs the perm and glasses.

HIGH SCHOOL GIRL



Getting used to making her own life choices by
testing the limits of her liver.

**TIME TO BRING
THE BODY TO LIFE**